

The Western Continental Shelf of the Chilean Antarctic Territory submission, made in 2022, is the second partial submission made by Chile to the United Nations Commission on the Limits of the Continental Shelf. Chile reserves its rights regarding the Eastern Continental Shelf of the Chilean Antarctic Territory, which will be determined in a future partial submission



## The Shackleton Fracture Zone is

➡ A major plate boundary transform fault limiting the Antarctic and Scotia plates

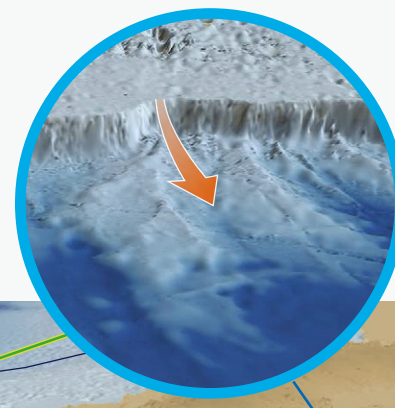
800 km

Long morphologically continuous high-relief ridge which connects the continental margin of southern Tierra del Fuego (Cape Horn archipelago and Diego Ramírez islands) with the northeastern end of the Antarctic Peninsula (Piloto Pardo Islands and South Shetland Islands)

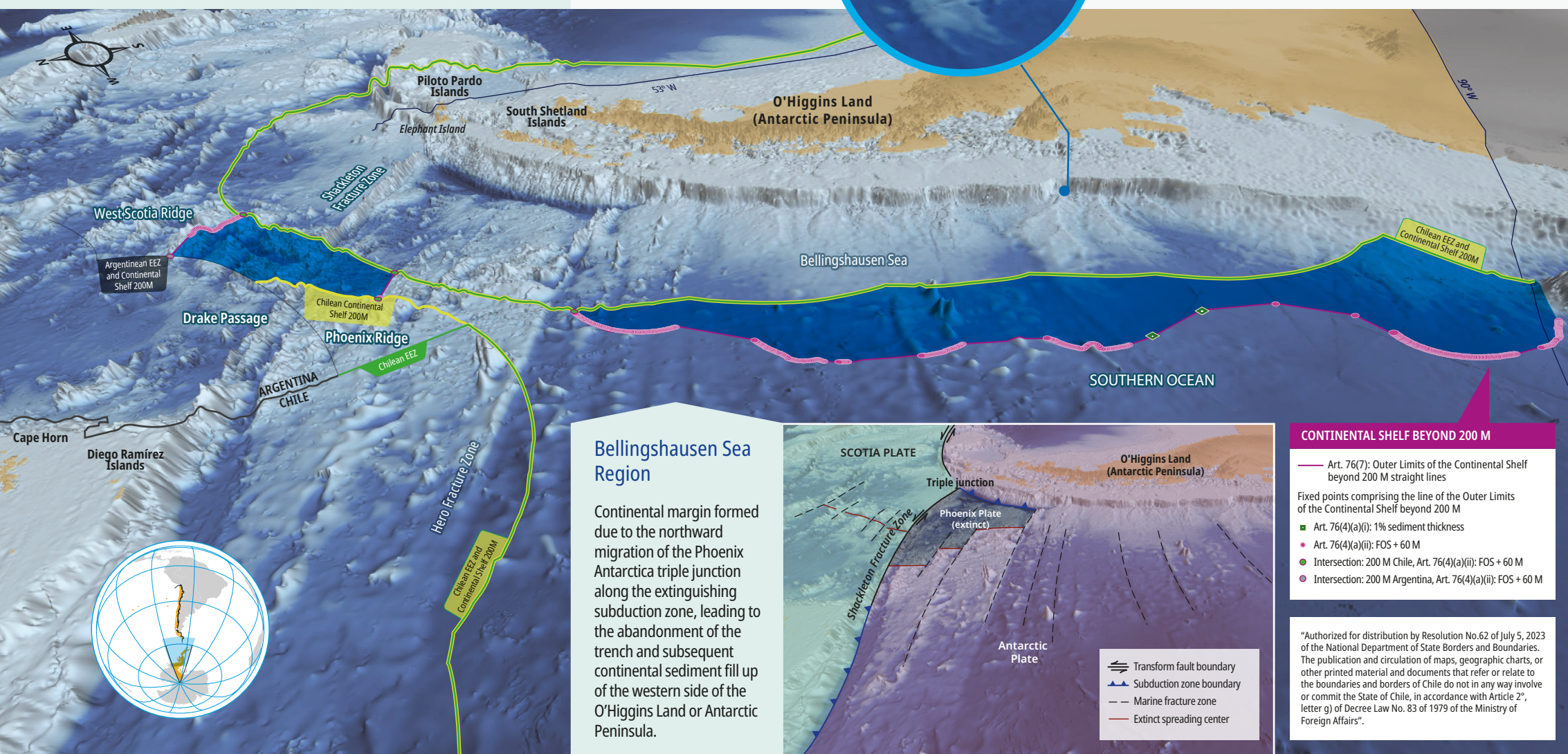
4000 m  
Some of its highest peaks exceed 4000 m above the seabed.

December  
1st  
1959

Chile is an original signatory of the 1959 Antarctic Treaty, which entered into force on 23 June 1961. Chile recalls the principles and objectives shared by the Antarctic Treaty and the Convention, and the importance of the Antarctic system and the Convention working in harmony and thereby ensuring continuing peaceful cooperation, security, and stability in the Antarctic area.



The predominant offshore incursions of coalescent megafans in this region have been formed by submarine mass wasting slope processes, increased by the high continental sediment outwash produced by the glacial erosion, channelized across the shelf to be later deposited as fans at the base of the slope, and locally reworked and reshaped by sea bottom currents.



## Commission members who provided advice

Mr. Gonzalo Yáñez Carrizo, member of the Commission (2017 - present), has assisted Chile in the preparation of this Partial Submission.

## Provisions of Article 76 invoked

Chile invokes the provisions of paragraphs 1, 3, 4, 5, and 7 of Article 76 of the Convention in support of the establishment of the outer limits of the Western Continental Shelf of the Chilean Antarctic Territory.

This partial submission ratifies Chile's commitment to Antarctica and demonstrates our country's active role in the scientific research and conservation of the Antarctic continent.



## Continental Shelf National Committee

1. National Department of State Borders and Boundaries (DIFROL)
2. Ministry of Foreign Affairs of Chile
3. General Staff of the Navy
4. Ministry of Defense - Undersecretary of the Armed Forces
5. Chilean Antarctic Institute
6. Chilean Navy Hydrographic and Oceanographic Service
7. National Geology and Mining Service
8. Empresa Nacional del Petróleo (ENAP)
9. Continental Shelf Group (DIFROL)
10. Technical Advisory Group